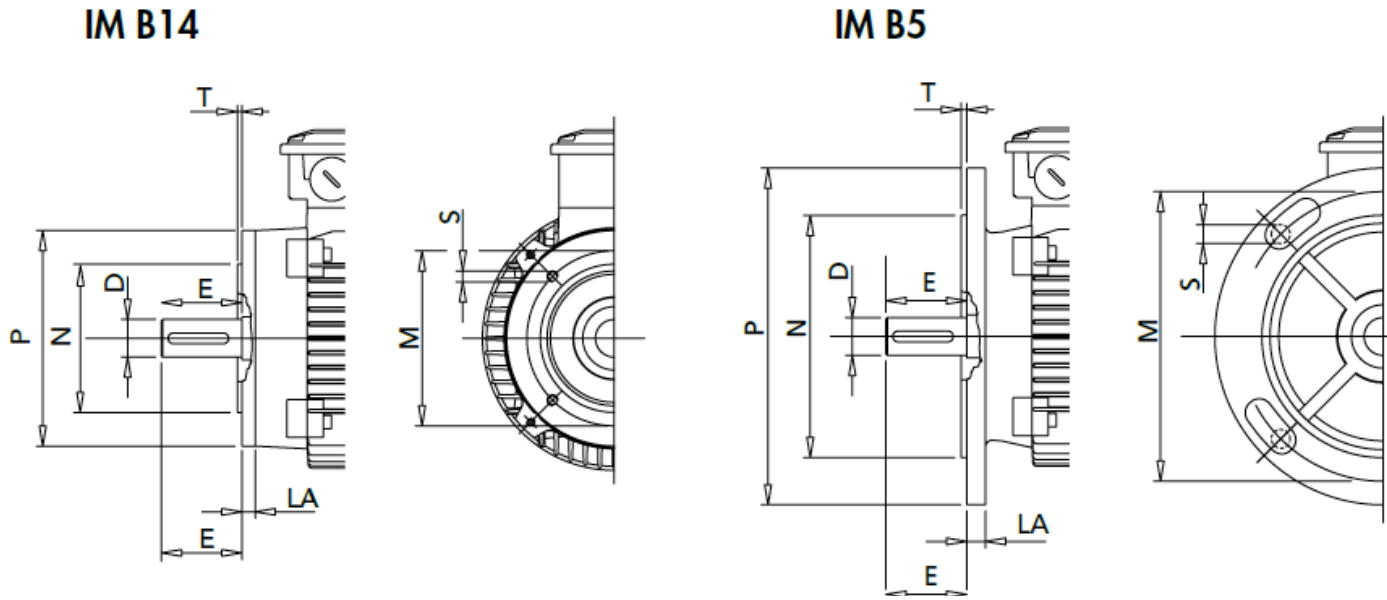


IM B14 / IM B5 - Flange Dimensions

See page 25-28 for motor dimensions



IM B14 - C Flange & IM B5 - D Flange
All dimensions in mm

M = Center to center bolt hole circle
N = Spigot diameter
P = Outside diameter

Frame	B14						B14	B14	B5						B5	B5
	M	N	P	S	T	LA	Reduced Frame	Increased Frame	M	N	P	S	T	LA	Reduced Frame	Increased Frame
56	65	50	80	M5	2.5	8	-	63	100	80	120	7	2.5	7	-	-
63	75	60	90	M5	2.5	8	56	71/80	115	95	140	9.5	3	8	56	71
71	85	70	105	M6	2.5	8	63	80/90	130	110	160	9.5	3.5	10	63/56*	80/90
80	100	80	120	M6	3	9	71/63	90/100	165	130	200	11.5	3.5	10	71/63	-
90	115	95	140	M8	3	9	80/71	100/112	165	130	200	11.5	3.5	12	71*	-
100	130	110	160	M8	3.5	10	90	132	215	180	250	14	4	14	90/80/71*	-
112	130	110	160	M8	3.5	10	90	132	215	180	250	14	4	14	90/**	-
132	165	130	200	M10	3.5	30	112/100	-	265	230	300	14	4	14	112*	-
160	215	180	250	M12	4	12	132***	-	300	250	350	18	5	15	132***	-

* May require windings pressed at additional cost
 ** Shaft machining required at additional cost
 *** If frame is 160L: shaft extension is required.
 If frame is 160M: shaft extension and bearing repositioning is required