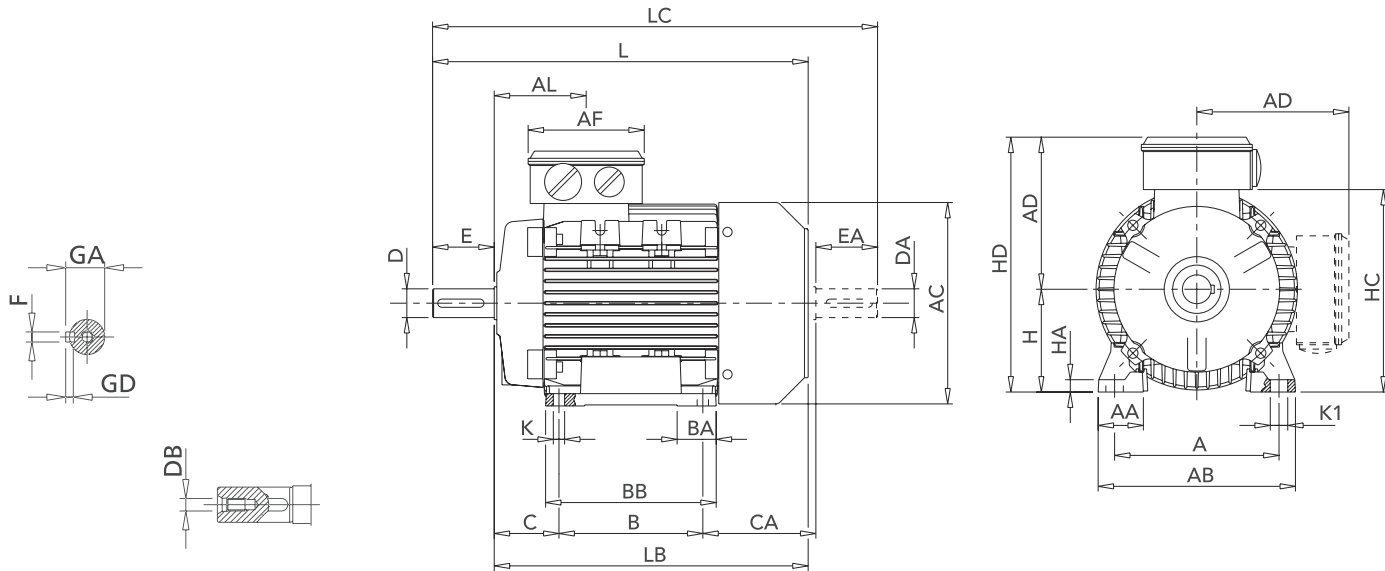


IM B3 Dimensions (Aluminum Frame)

See page 29 for B5 & B14 flange dimensions



• F2 (right side) LEAD BOX IS STANDARD

NON-DRIVE END SHAFT IS OPTIONAL LC, EA, DA

IM B3 - AM / ST / FB

All dimensions in mm

(Frame)	H	A	B	C	K ¹⁾	AB	BB	AD ²⁾	HD ²⁾	AC	HC	HA	K1	AL	AF	BA	AA	D/DA	E/EA	F	GD	GA	DB ³⁾	CA	L	LB	LC
56 *	90	71	36	6	107	86	92	148	110	109	8	9	61	92	27	27	9	20	3	3	10.2	M3	64	188	168	211	
63 *	100	80	40	7	120	100	96	159	124	120	8	11	63	92	29	30	11	23	4	4	12.5	M4	72	211	188	238	
71	112	90	45	8	135	108	110	181	139	142	9	11	69	92	28	31	14	30	5	5	16	M5	83	246	216	278	
80	125	100	50	10	153	125	129	209	160	162	9.5	14	79	116	28.5	34.5	19	40	6	6	21.5	M6	89	272	232	319	
90S	140	100	56	10	170	150	138	228	180	181	11	15	85	116	53	37	24	50	8	7	27	M8	116	317	267	372	
90L	140	125	56	10	170	150	138	228	180	181	11	15	85	116	53	37	24	50	8	7	27	M8	91	317	267	372	
100	160	140	63	11	192	166	145	245	196	198	12	17	92	116	38	44	28	60	8	7	31	M10	110	366	306	433	
112	190	140	70	12.5	220	175	161	273	225	226	15	19	92	116	46	48	28	60	8	7	31	M10	126	388	328	456	
132S	216	140	89	12	256	180	195	327	248	261	17	20	100	133	45	59	38	80	10	8	41	M12	134	442	362	523	
132M	216	178	89	12	256	218	195	327	248	261	17	20	120	133	45	59	38	80	10	8	41	M12	136	482	402	563	
132M ⁴⁾	216	178	89	12	256	218	195	327	248	261	17	20	120	133	45	59	38	80	10	8	41	M12	166	500	420	593	
160M	254	210	108	14	320	270	238	398	317	316	23	18	146	150	65	76	42	110	12	8	45	M16	180	608	498	718	
160L	254	254	108	14	320	310	238	398	317	316	23	18	168	150	65	76	42	110	12	8	45	M16	180	652	542	762	
160L ⁵⁾	254	254	108	14	320	310	238	398	317	316	23	18	168	150	65	76	42	110	12	8	45	M16	210	678	568	678	

* Non-removable feet - side mount only (F2 standard/ F1 upon request)

1) Clearance hole for screw 2) Maximum dimension 3) Centering holes in shaft extensions to DIN 332 part 2 4) Only for MT A2 5) Only for LR A4