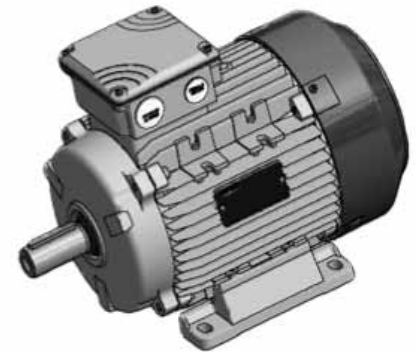
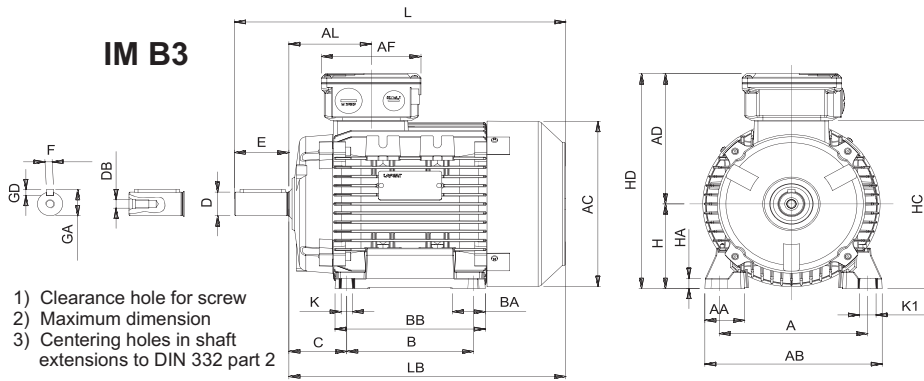
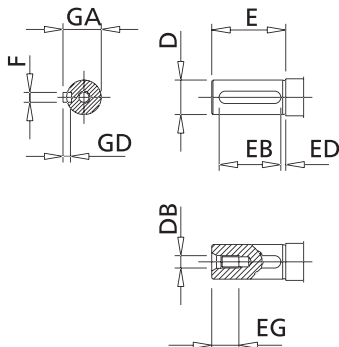


**HPS FRAME SIZE 71 - 132
ALUMINIUM ALLOY FRAME**

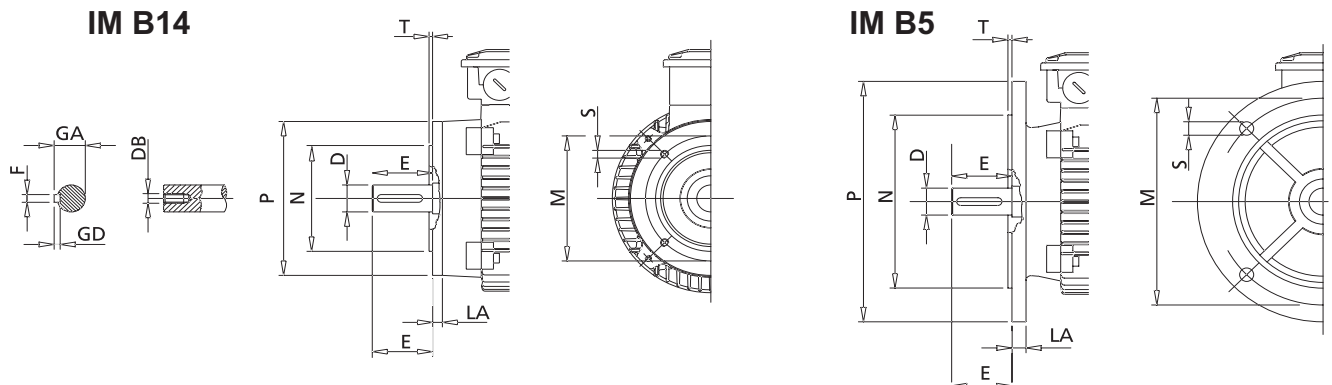


IEC	H	A	B	C	K ¹⁾	AB	BB	AD ²⁾	HD ²⁾	AC	HC	HA	K1	L	LB	AL	AF	BA	AA	D/DA	E/EA	F/FA	GD	GA/GC	DB ³⁾
71	71	112	90	45	7	144	109	112	183	142	142	9	17	245	215	75	93	22	30	14	30	5	5	16	M5
90S	90	140	100	56	10	170	150	148	238	180	181	11	15	317	267	85	110	28/53	37	24	50	8	7	27	MB
90L	90	140	125	56	10	170	150	148	238	180	181	11	15	317	267	85	110	28/53	37	24	50	8	7	27	MB
112M	112	190	140	70	12.5	220	175	171	283	225	226	15	19	388	328	92	110	46	48	28	60	8	7	31	M10
112XL	112	190	140	70	12	220	175	171	283	225	226	15	19	410	350	92	110	46	48	28	60	8	7	31	M10
132M	132	216	178	89	12	256	218	195	327	248	261	17	20	482	402	120	133	45	59	38	80	10	8	41	M12
132XL	132	216	178	89	12	256	218	195	327	248	261	17	20	505	425	120	133	45	59	38	80	10	8	41	M12
132XXL	132	216	178	89	12	256	218	195	327	248	261	17	20	556	476	120	133	45	59	38	80	10	8	41	M12



IEC	D	E	F h9	GD	GA	DB	EG	EB	ED
71	14j6	30	5	5	16	M5	12.5	20	4
90S-L	24j6	50	8	7	27	M8	19	40	4
112M-XL	28j6	60	8	7	31	M10	22	50	4
132M-XL-XXL	38k6	80	10	8	41	M12	28	70	5

1) Centering holes in shaft extensions to DIN 332 part 2



IEC	SMALL FLANGE B14						INCREASED FLANGE B14						FLANGE B5					
	P	N	LA	M	T	S ¹⁾	P	N	LA	M	T	S ¹⁾	M	N	P	T	LA	S ¹⁾
71	105	70	11	85	2.5	M6	140	95	8	115	2.5	M8	130	110	160	3.5	10	M8
90S-L	140	95	10	115	3	M8	160	110	9	130	3.5	M8	165	130	200	3.5	12	M10
112M-XL	160	110	10	130	3.5	M8	200	130	12	165	3.5	M10	215	180	250	4	14	M12
132M-XL-XXL	200	130	30	165	3.5	M10	250	180	12	215	4	M12	265	230	300	4	14	M12

Higher Horse Power rating in each frame may have oversized bearing on drive-end.